

PreferredLiving
PreferredLiving.com

**Handheld Pruning Saw
User Manual and Operating Instructions
Item Number: 21373**



Preferred Living
PreferredLiving.com
2001 Sporty's Drive
Batavia, OH 45103
PreferredLiving@Sportys.com
1-800-776-7897

Fig.1

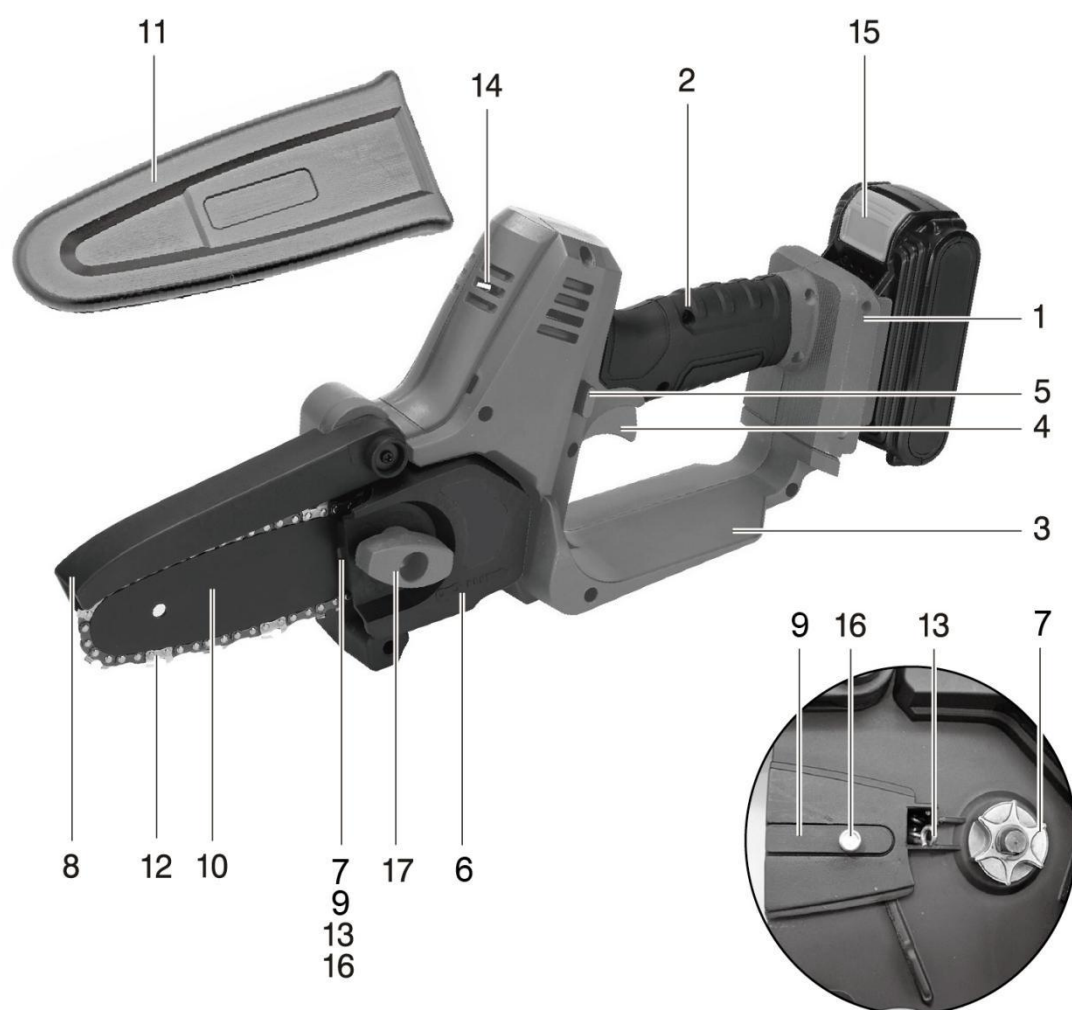


Fig.2

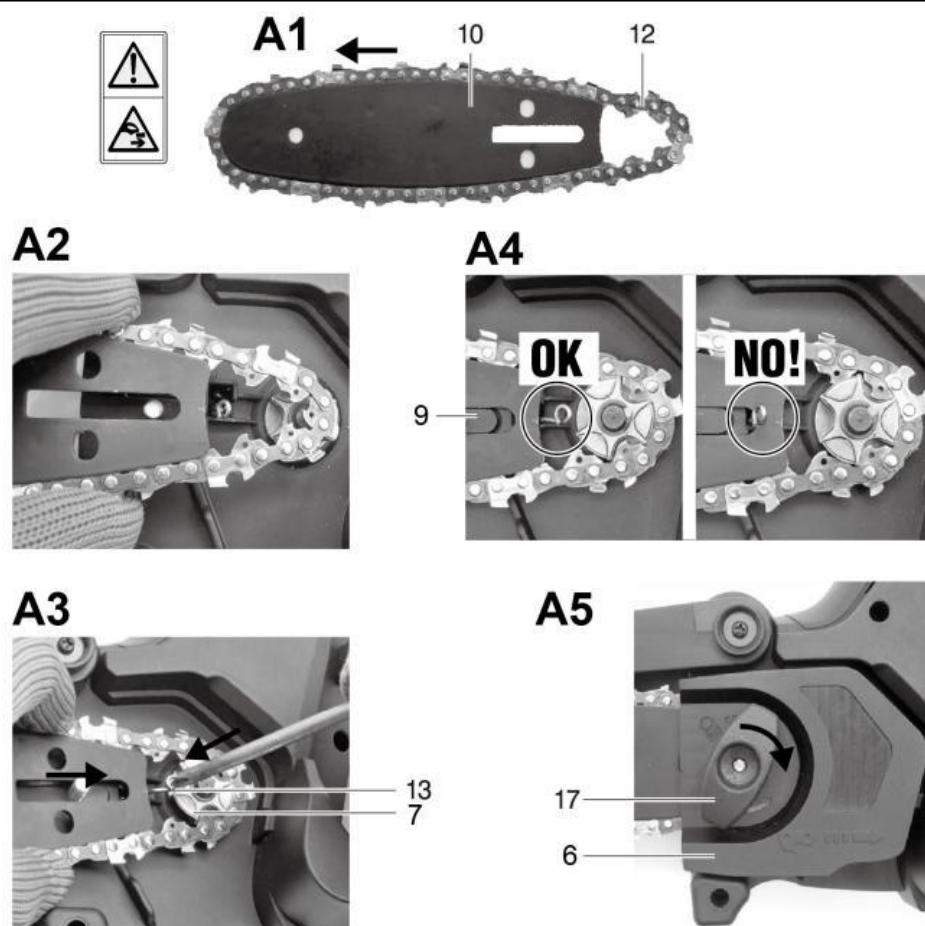


Fig.3

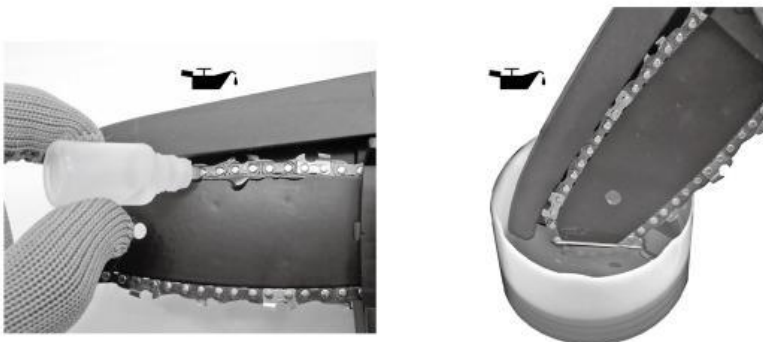


Fig.4

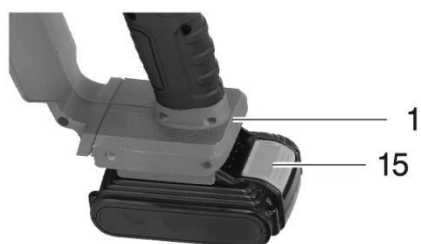


Fig.5



Fig.6

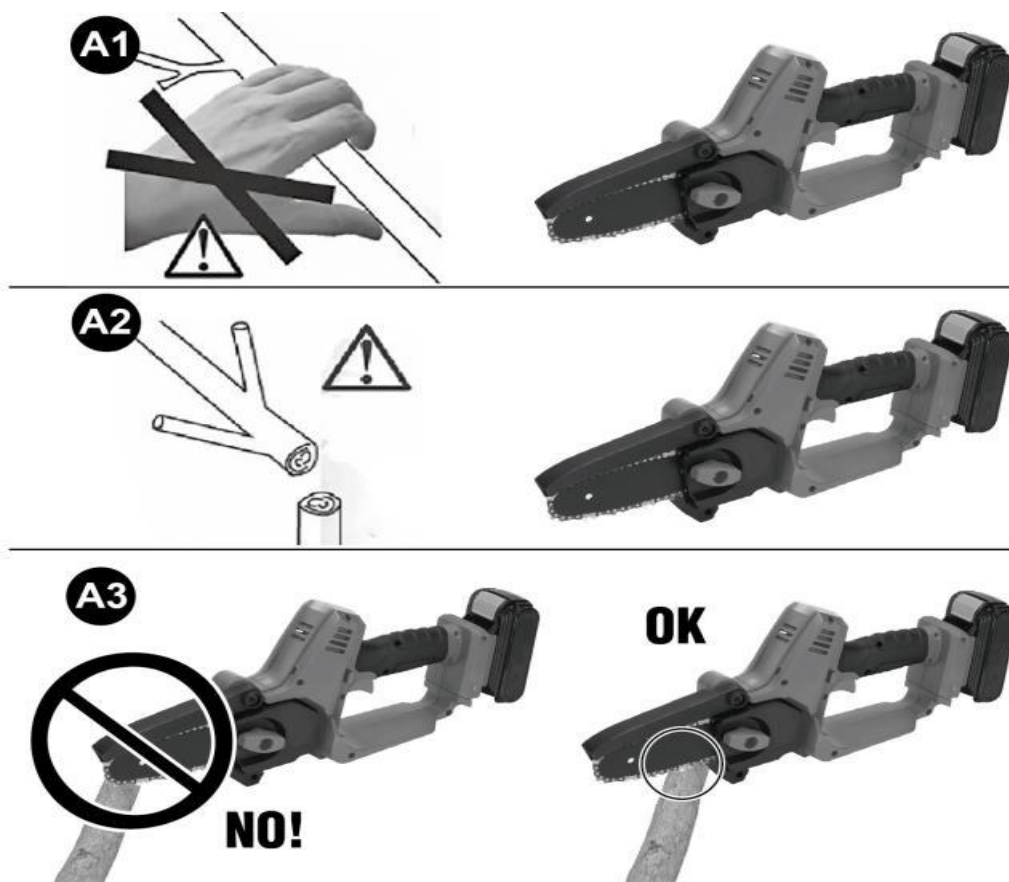
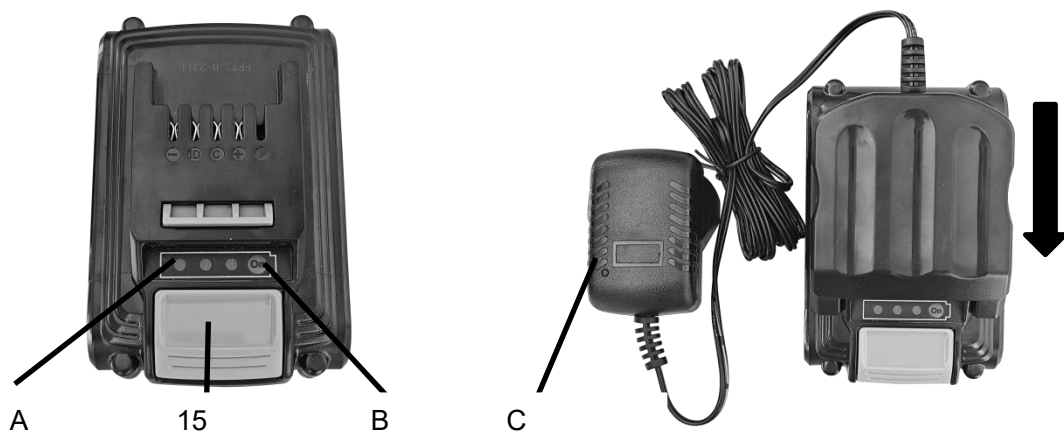


Fig.7



Safety warnings

All Operators Must Read These Instructions Before Use. These instructions are for your safety. Please read through them thoroughly before use and retain them for future reference.

General power tool safety warnings



WARNING! Read all safety warnings and all instructions. Failure to follow the warnings and instructions may result in electric shock, fire and/or serious injury. Save all warnings and instructions for future reference.

The term “power tool” in the warnings refers to your battery-operated (cordless) power tool.

Work area safety

1. **Keep work area clean and well-lit.** Cluttered or dark areas invite accidents.
2. **Do not operate power tools in explosive atmospheres, such as in the presence of flammable liquids, gases or dust.** Power tools create sparks which may ignite the dust or fumes.
3. **Keep children and bystanders away while operating a power tool.** Distractions can cause you to lose control.

Electrical safety

1. Do not expose power tools to rain or wet conditions. Water entering a power tool will increase the risk of electric shock.
2. If operating a power tool in a damp location is unavoidable, take extra precautions to avoid electric shock

Personal safety

1. **Stay alert, watch what you are doing, and use common sense when operating a power tool. Do not use a power tool while you are tired or under the influence of drugs, alcohol or medication.** A moment of inattention while operating power tools can result in serious personal injury.
2. **Use personal protective equipment. Always wear eye protection.** Protective equipment such as dust mask, non-skid safety shoes, hard hat, or hearing protection used for appropriate conditions will reduce personal injuries.
3. **Prevent unintentional starting. Ensure the switch is in the off-position before connecting to battery pack, picking up or carrying the tool.** Carrying power tools with your finger on the switch or energizing power tools that have the switch on invites accidents.
4. **Remove any adjusting key or wrench before turning the power tool on.** A wrench or a key left attached to a rotating part of the power tool may result in personal injury.
5. **Do not overreach. Keep proper footing and balance at all times.** This enables better control of the power tool in unexpected situations.
6. **Dress properly. Do not wear loose clothing or jewellery. Keep your hair, clothing and gloves away from moving parts.** Loose clothes, jewellery or long hair can be caught in moving parts

Power tool use and care

1. **Do not force the power tool. Use the correct power tool for your application.** The correct power tool will do the job better and safer at the rate for which it was designed.
2. **Do not use the power tool if the switch does not turn it on and off.** Any power tool that cannot be controlled with the switch is dangerous and must be repaired.
3. **Store idle power tools out of the reach of children and do not allow persons unfamiliar with the power tool or these instructions to operate the power tool.** Power tools are dangerous in the hands of untrained users.
4. **Maintain power tools. Check for misalignment or binding of moving parts, breakage of parts and any other condition that may affect the power tool's operation. If damaged, have the power tool repaired before use.** Many accidents are caused by poorly maintained power tools.
5. **Keep cutting tools sharp and clean.** Properly maintained cutting tools with sharp cutting edges are less likely to bind and are easier to control.
6. **Use the power tool, accessories and tool bits etc. in accordance with these instructions, taking into account the working conditions and the work to be performed.** Use of the power tool for operations different from those intended could result in a hazardous situation.

Battery tool use and care

1. Recharge only with the charger specified by the manufacturer. A charger that is suitable for one type of battery pack may create a risk of fire when used with another battery pack.
2. Use power tools only with specifically designated battery packs. Use of any other battery packs may create a risk of injury and fire.
3. When battery pack is not in use, keep it away from other metal objects, like paper clips, coins, keys, nails, screws or other small metal objects that can make a connection from one terminal to another. Shorting the battery terminals together may cause burns or a fire.
4. Battery chemicals cause serious burns – Never let a damaged battery pack contact the skin, eyes or mouth. If a damaged battery pack leaks battery chemicals, use rubber or neoprene gloves to safely dispose of it. If skin is exposed to battery fluids, wash the affected area with soap and water and rinse with vinegar. If eyes are exposed to battery chemicals, immediately flush with water for 20 minutes and seek medical attention. Remove and dispose of contaminated clothing.

Battery tool use and care

- **Recharge only with the charger specified by the manufacturer.** A charger that is suitable for one type of battery pack may create a risk of fire when used with another battery pack.
- **Use power tools only with specifically designated battery packs.** Use of any other battery packs may create a risk of injury and fire.
- **When battery pack is not in use, keep it away from other metal objects, like paper clips, coins, keys, nails, screws or other small metal objects, that can make a connection from one terminal to another.** Shorting the battery terminals together may cause burns or a fire.
- **Battery chemicals cause serious burns** – Never let a damaged battery pack contact the skin, eyes or mouth. If a damaged battery pack leaks battery chemicals, use rubber or neoprene gloves to safely dispose of it. If skin is exposed to battery fluids, wash the affected area with soap and water and rinse with vinegar. If eyes are exposed to battery chemicals, immediately flush with water for 20 minutes and seek medical attention. Remove and dispose of contaminated clothing.
- **Do not open the rechargeable battery.** The rechargeable battery can be damaged by improper handling.
- **Do not expose the rechargeable battery to heat, fire, water and humidity.** There is a danger of explosion.
- **Vapors may escape in case of damage or improper use of the rechargeable battery. Provide good ventilation and seek medical assistance in case any symptoms occur.** The vapors can irritate your respiratory tract and cause illness.

Tips for maintaining maximum battery life

1. Charge the battery cartridge before completely discharging. Always stop tool operation and charge the battery cartridge when you notice less tool power.
2. Never recharge a fully charged battery cartridge. Overcharging shortens the battery service life.
3. Charge the battery cartridge with room temperature at 10 °C – 40 °C (50 °F – 104 °F). Let a hot battery cartridge cool down before charging it.
4. Charge the battery cartridge if you do not use it for a long period (more than six months).

Important safety instructions for Charger

1. Use only the voltage specified on the charger.
2. Before charging the battery, first connect the power cable to the outlet and then connect the battery pack to the charger. After the battery has been fully charged, disconnect the power supply after removing the battery pack from the charger.
3. Use indoors only, avoid water, rain and moisture.
4. The charger charges the following battery packs.

Battery charger Model number.	Battery pack	
	Model	Volt
8066-CHA	DC11-2100500U	100-240V AC,50/60HZ
Do not charge non-rechargeable batteries with this device.		

SAFETY WARNINGS FOR NOISE AND VIBRATIONS

The noise and vibration levels shown in the attached sheet are average values for use of the tool. The different work situations and the lack of maintenance have a significant influence on noise emissions and vibrations. Use preventive measures in order to eliminate possible damage due to high noise and vibration stresses; wear ear protections, protective eyewear, anti-vibration gloves, and take breaks during machining.

SAFETY WARNINGS FOR THE PRUNER SAW!

ATTENTION! Do not touch the cutter bar with battery inserted in the tool.

User Restrictions:

- Only allow individuals who have read and understood these instructions to use the tool. Local regulations may limit the age of the user.
- Do not allow children to use the tool.

Operational Safety:

- Start the tool only when your free hand is at least 25 cm away from the cutting blades.
- Insert the battery at the beginning of work and remove it immediately after finishing to keep the tool safe.
- Do not remove cut material or hold material to be cut when the tool is nearby. Ensure the tool is switched off when clearing jammed material to avoid serious injury.

Transport and Storage:

- Transport the tool with the cutting bar protected by the sheath and the battery disconnected.
- Do not leave the tool unattended to prevent unauthorized use.
- Keep the tool and battery out of reach of children and inexperienced persons.

Handling and Use:

- Maintain a stable and safe position while using the tool; move by walking without running.
- Do not point the cutter bar towards people, animals, or yourself.
- Keep strangers, children, and animals at a minimum safety distance of 5 meters.
- Clear the area of hidden foreign objects before using the tool.
- If the tool jams, switch it off immediately and do not force it.
- If the tool stops, do not continue pressing the start button to prevent battery damage.
- Do not use the tool on aquatic plants or if the plants are wet with water.

Regular Safety Practices:

- Always switch off the tool and disconnect the battery:
 - Whenever the tool is left unattended.
 - Before clearing a jam.
 - Before inspection, cleaning, and maintenance work.
 - After contact with a foreign object.
 - If the tool starts working abnormally during recharging.
 - If the safety button no longer prevents accidental starting.
- Ensure ventilation slots are free from dirt accumulation.
- Before checking, cleaning, and maintenance, switch off the tool and remove the battery.

CAUSES OF KICKBACK AND PREVENTION FOR THE OPERATOR

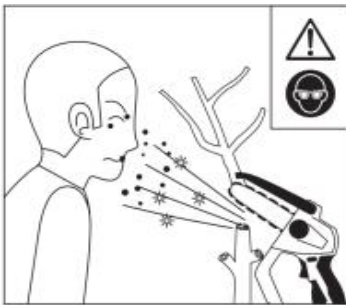
Tip contact can, in some cases, cause a sudden reverse reaction, pushing the guide bar up and back towards the operator. Tightening the sprocket chain on top of the guide bar can rapidly push the sprocket chain back towards the operator. Either of these reactions can cause a loss of control of the pruner, thus causing serious personal injury. You shouldn't rely exclusively on the safety devices built into the pruner. The user must take various measures to eliminate the risk of accidents or injuries during the cutting work. Hold the saw firmly, with your thumbs and fingers around the handle of the pruner, and position your body and arms to resist kickback forces. Kickback forces can be controlled by the operator if proper precautions are taken. Do not extend your arms too far and do not cut above shoulder height. This helps to avoid unintentional contact with the edges and allows for better control of the chainsaw in various unexpected situations.

Use only guide bars and chains specified by the manufacturer. Inadequate replacement guides and chains can cause chain breakage and/or kickbacks.

Follow the manufacturer's instructions regarding sharpening and maintenance of the pruner. A decrease in depth level can lead to increased kickback.

RESIDUAL RISKS

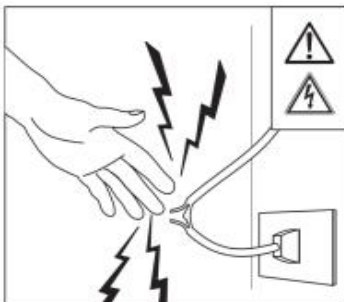
These illustrations show the main risks in using the tool. Read the instruction booklet carefully.



Throwing of material towards the eyes and body of the operator. Wear protective goggles.



Sharp parts that cause injury. Wear protective gloves and keep a safe distance from the cutting area and the bar.



Risk of electric shock with danger to life. Do not touch live parts and keep a safe distance. Before any maintenance, disconnect the plug from the power socket.

Warning: always check that there are no electrical cables near the work area.

Symbols

	<ul style="list-style-type: none"> ● Attention! ● Read all instructions carefully before use. ● Danger of explosion. ● Wear eye protection goggles, ear defenders and a hard hat. ● Wear gloves to protect your hands. ● Wear high non-slip footwear to protect your legs. ● Do not use in rainy or humid environments. ● Cutting hazard. Maintain a safe distance from the bar. ● Danger of kickback. ● Always disconnect the battery in case of transport maintenance or malfunction. ● Lubricate the chain regularly. ● Keep the tool and batteries away from heat and fire. Do not expose to temperatures exceeding 50°C. ● Do not dispose of with household waste. ● Electrical and electronic waste may contain substances dangerous for the environment and human health; therefore they must not be disposed of with household waste but through a separate collection in the appropriate collection centers or returned to the seller in the case of purchase of a new similar instrument. Illegal waste disposal involves the application of administrative sanctions. ● Do not dispose of with household waste. Battery disposal: The batteries included in the equipment can be disposed of along with it. Do not dispose of used batteries in fire and do not dispose of them in the environment, but take them to special disposal centres. ● Noise level.
--	--

Intended Use

This machine, hereinafter referred to as pruner, must be used exclusively for pruning and cutting accessible branches without the aid of means to lift the operator.

IT MUST NOT BE USED AS A CHAIN SAW

It is forbidden to use it to prune trees or to prune trees and in modes with the operator lifted from the ground. It is also useful for cutting and shortening small logs, with a compatible diameter, secured to a support stand. These instructions contain the information and what is considered necessary for the correct use, knowledge and normal maintenance of the tool. More and exhaustive information on cutting techniques must be acquired by the user, in books and publications specifications or by participating in specialization courses with practical training.

Description of parts (Fig.1)

<ul style="list-style-type: none"> 1 Battery connector 2 Handle 3 Handguard 4 On/OFF button 5 Anti-start safety button 6 Carter 7 Gear wheel 8 Mobile chain guard 9 Bar groove 	<ul style="list-style-type: none"> 10 Bar 11 Scabbard 12 Chain 13 Chain tensioner 14 Electric motor cooling slots 15 Battery release device 16 Bar fixing pin 17 Bar fixing flywheel
---	--

Technical data

Voltage	20V DC
Battery type	Lithium-Ion
Battery capacity	2000mAh
Charging time	3-5 hours
Idling speed	4200/min
Cutting length	110mm
Length of the saw bar	155mm
Chain speed	6 m/s
Chain pitch	1/4"
Chain guide tooth thickness	0.6mm
Number of drive pinion teeth	6
Noise pressure level(LPA)*	88 dB(A)(K = 3 dB(A))
Sound power level(LWA)*	96dB(A)(K =3 dB(A))
Guaranteed sound power level LwA	99dB(A)
Vibration level	<2,5 m/s ² K=1,5

INSTALLATION

ATTENTION! The manufacturer declines all responsibility for any direct and/or indirect damage caused by incorrect electrical connection.

ATTENTION! Before carrying out the following operations, make sure that the tool is switched off and the battery is disconnected.

TRANSPORT

Always use its packaging to transport the appliance; this will protect it from knocks, dust and humidity which can compromise its regular functioning. During transport, remove the battery from the device.

HANDLING

Grasp the device by the handle and bring it to the side without touching the ground; after use, place it gently. Transport it with the battery removed.

COMMISSIONING

In the place where you will use the electrical appliance it is advisable to consider:

- that the area is not damp and that adverse atmospheric agents are not present
- that a large operating area free from impediments is provided around it
- that there is good lighting
- that it is used near the main switch with differential (for the battery charger).
- that the power supply system is earthed in compliance with the standards (only if the electrical appliance is class I, i.e. equipped with a plug with earth cable).
- that the room temperature is between 10° and 40°C.
- that the environment is not in a flammable/explosive atmosphere.

Extract the appliance and the components and visually check their perfect integrity; at this point proceed to a thorough cleaning.

ATTENTION! Before using the pruner, it is necessary to fully charge the battery.

ATTENTION! Recharge only with a charger intended for this type of appliance. Using an unsuitable charger can cause damage to the batteries, the device and, in some cases, fire.

ATTENTION! To keep the battery efficient, do not discharge it completely.

ATTENTION! Before using the pruner, it is necessary to fully charge the battery.

ATTENTION! Recharge only with a charger intended for this type of appliance. Using an unsuitable charger can cause damage to the batteries, the device and, in some cases, fire. To keep the battery efficient, do not discharge it completely.

Carry out a subsequent complete recharge:

- After each use.
- At least every 4 months, even when not in use.
- If during work you notice a noticeable decrease in the performance of the appliance.

INSERTING-REMOVING THE BATTERY (FIG.4)

- Insert the batteries through the guides on the battery housing (pos.1)
- Extract the battery from the tool seat by acting on the release device on the batteries (pos.15)

ASSEMBLY INSTRUCTIONS

ATTENTION! Before carrying out any work on the device, remove the batteries from the device.

ATTENTION! When handling the chain, always use cut-resistant protective gloves.

The machine is equipped with an automatic chain tensioner (13) capable of tensioning the chain correctly without making any adjustments.

- Fig.2/A1: Insert the chain (12) around the bar (10) taking care to respect the correct direction of the cutting edge.
- Fig.2/A2: Position the bar and the chain over the sprocket.
- Fig.2/A3: Using a screwdriver, press the spring tensioner (13) downwards and wind the chain between the teeth of the sprocket (7).
- Fig.2/A4: Insert the bar in the groove (9) and check the correct positioning of the tensioner.
- Fig.2/A5 Fit the casing (6) and secure the handwheel (17) fully.

If the chain slackens, simply unscrew the handwheel 17 and fix it again.

Periodically it is necessary to clean the chain and bar guard area (6).

Completely unscrew the handwheel (17), remove the casing (6), remove the bar and chain, clean the parts and reassemble all the components following the instructions given above.

ATTENTION! DO NOT USE THE MACHINE WITHOUT LUBRICATING THE CHAIN. LUBRICATION OF THE CHAIN (FIG.3)

Before starting the machine, it is mandatory to lubricate the chain with specific ecological oil for wood cutting chains.

It is necessary to lubricate the chain before each use and every 15 cuts.

The oil must be applied in the sliding area between the chain (12) and the bar (10) using an oiler or by dipping the tip of the bar into a container filled with a little oil (fig.3).

ATTENTION! Do not use the machine before having tensioned the chain.

ATTENTION! The chain check must be carried out with the battery disconnected.

ATTENTION! During use, the chain may become loose. Bring it back to the correct tension.

ATTENTION! The chain tension must be checked every time you start work, after the first cuts and regularly every 10 minutes.

ATTENTION! During the first few cuts, when the machine is still new, the chain may slacken. This is normal behavior.

ATTENTION! Never leave the chain slack as it can come off the bar while you are cutting.

ATTENTION! A chain that is too tight or too loose can wear out abnormally, also wearing out the bar.

TURNING THE PRUNER ON AND OFF (FIG. 5)

ATTENTION! Before starting the pruner, make sure that there are no people or animals within a distance of less than 2m.

ATTENTION! The hand not holding the pruner must ALWAYS be at a suitable distance from the pruner, at least 0.5m.

- Hold the pruner firmly by the handle (2).
- Press the safety button (5) and in succession press the on/off button (4).
- To switch off the pruner, simply release the switch lever (4).

PERSONAL SAFETY

Suitable clothing and accessories must be used to protect against residual risks deriving from use of the tool.

- Safety goggles
- Gloves - Helmet for protection from falling branches and flying materials
- Soundproofing cap for hearing protection
- Close-fitting, cut-proof safety clothing and boots

INSTRUCTIONS FOR USE

Before starting work, make sure the area is free of hidden objects such as electric wires, fences, cables, irrigation pipes, etc.; also keep strangers and animals away.

It is forbidden to use it to prune trees or to prune trees in modes with the operator lifted from the ground. It is forbidden to use it at a height higher than your shoulders, as it is possible that the tool slips out of your hand and falls on you; in addition to this potential danger, you will carry out the work with more effort and the cut branches will fall on you.

ATTENTION! DO NOT TOUCH THE BAR AND CHAIN FOR ANY REASON! (FIG. 6)

Firmly grasp the tool by the handle, position it in front of you with the cutting bar forward towards the vegetation or in any case towards the material to be cut.

Move your free hand away from the cutting area, it must be at least 25cm from the cutting area, identify the exact cutting point and make the cut.

Risk of kickback!!! Never cut on the tip of the bar but always rest the material to be cut on the base of the pruner as shown in (Fig 6/A3). If you need to remove cut branches using your free hand, then momentarily move the tool to the side. Do not push the cutter bar into the ground to cut roots as this will damage the chain.

If you use the pruner to cut small logs, always use a suitable support. At the end of work, always disconnect the battery and insert the cover (11) on the bar.

Regularly check the lubrication and tension of the chain.

CHAIN SHARPENING

- Have the chain serviced by a specialized workshop
- ATTENTION! if the chain is dull, the risk of kickback increases

Charging the battery pack

CAUTION! Risk of injury! Comply with all safety instructions when handling rechargeable devices.

NOTICE! Risk of damage to the unit! Do not allow the battery pack to deep discharge.

NOTICE! Risk of damage to the unit! Do not press the On/Off switch after the device has deactivated automatically.

Note: The Li-Ion battery pack can be charged at any time without affecting the lifetime of the unit.

Interrupting the charging process will not damage the battery pack.

Note: If the battery is fully loaded, the charger automatically switches over to the maintenance charge function. The battery can thus remain in the charger permanently.

The battery pack must be charged prior to the first start-up (charging time: ► *Technical Data*)

- Press in the locking button (15) and remove the battery from the device.
- Insert the battery pack into the battery charger. Plug the charger into the power supply. The charging status is displayed by the control lights (Fig.7/Item C).
- After the completion of charging, the LED will then turn green

Battery capacity indicator

Press the power button (Fig.7/Item B) for the battery capacity indicator (Fig.7/Item A). The battery capacity indicator shows the charge status of the battery using 3 LEDs.

All 3 LEDs are lit: The battery is fully charged.

2 LEDs are lit: The battery has an adequate remaining charge.

1 LED are lit: The battery will be empty soon, please recharge the battery.

Note: The battery pack can become a little warm during the charging. This is normal.

CLEANING AND MAINTENANCE

ATTENTION! Before carrying out any work on the device, disconnect the batteries.

- Regularly remove dirt and wood deposits from the engine cooling slots (Fig. 1/14). Engine cooling is very important and this operation must be done regularly even during use if deposits are noticed. To clean the ventilation slots, it is recommended to use a dry brush.
- After each prolonged operation, disassemble the bar and chain and clean them with a small brush. Carefully remove the wood deposits on the gear wheel (Fig/1/7), near the bar seat (16) and under the crankcase.
- To clean the surface of the plastic parts, use a cloth, brush or soft brush.
- If the tool is not used for a long time, it is advisable to clean the chain and bar in an oil bath and store them wrapped in waxed paper. Tension the chain when necessary
- Have the chain sharpened and maintained by a specialized workshop when necessary.
- Replace the chain when, after several sharpenings, the length of the tooth has reached 3-4 millimeters or when the chain links are worn. (Chain type: see technical data)
- Replace the bar if it has been deformed or damaged. (Bar type: see technical data).

STORAGE

1) Carefully maintain and clean the entire tool as specified in the relative paragraphs. Recharge the battery.

2) Where to store the tool:

- Out of the reach of children
- In a stable and safe position
- In a dry and temperate place
- Away from direct light
- Do not close it in nylon bags, humidity could form.

TROUBLESHOOTING

Fault	Probable cause	Remedies
The pruner does not start	Battery is flat	Recharge the battery
	Battery too cold or hot	Leave the batteries in a temperate environment 18-24°C
The pruner works intermittently	Faulty on/off switch	Contact the manufacturer
	Loose contact in the tool	Contact the manufacturer
Chain and bar get hot	Chain not lubricated	Lubricate
	Chain too tight	Loosen chain
Pruner cuts poorly, binds or knocks	Loose chain	Adjust chain tension
	Worn chain	Sharpen or replace
	Defective chain	Replace
An oil stain forms under the pruner	The tool has not been cleaned and the sawdust releases the oil accumulated during cutting	Clean the tool by removing the sawdust from the casing
The bar comes loose	The bar fixing screw has not been tightened	Make sure that the screw has been tightened correctly

ATTENTION! If after having carried out the interventions described above the electric tool does not work correctly or in the event of anomalies other than those indicated, take it to an authorized assistance center showing the proof of purchase and requesting original spare parts. Always refer to the information on the technical data label.

Disposal



Disposal of the appliance

A crossed-out wheeled bin icon means: Waste electrical products should not be disposed of with household waste. Please recycle where facilities exist. Check with your local authority or local store for recycling regulations.

- Do not dispose of electrical appliances as unsorted municipal waste. Use separate collection facilities.
- Contact your local government agency for information regarding the collection systems available.
- If electrical appliances are disposed of in landfills or dumps, hazardous substances can leak into the groundwater and get into the food chain, damaging your health and well-being.
- When replacing old appliances with new ones, the retailer is legally obligated to take back your old appliance for disposal at least free of charge. The product comes in a package that protects it against damage during shipping. Keep the package until you are sure that all parts have been delivered and the product is functioning properly. Recycle the package afterwards or keep it for long-term storage.



Battery Caution + Disposal

Always dispose of your battery pack according to federal, state, and local regulations. Contact a recycling agency in your area for recycling locations.



CAUTION! Even discharged battery packs contain some energy. Before disposing, use electrical tape to cover the terminals to prevent the battery pack from shorting, which could cause a fire or explosion.

Service + Support:

If power tool requires service or maintenance, please contact Sporty's Preferred Living customer service at 1-800-776-7897 or via email at PreferredLiving@sportys.com